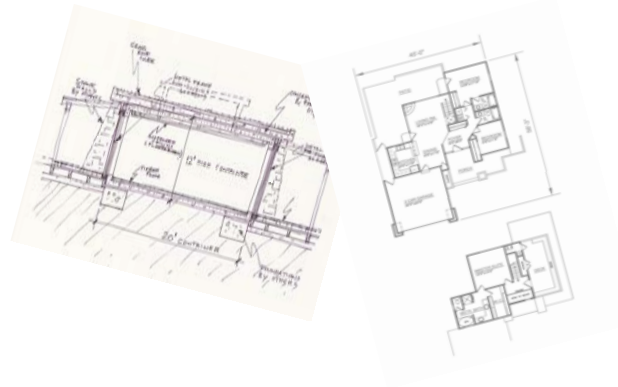




Affordable Housing—3-4 Bedroom



Step 1: Architectural plans to suit the site



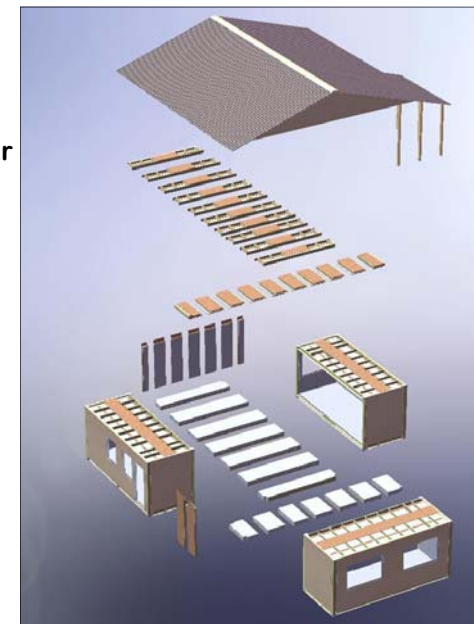
Step 2: Conceptual Design

Modular Domestic Homes

- Steel and Timber construction
- Designed to meet UK, Euro, NZ or Australian Standards
- Environment Friendly
- Double Insulation Values req. by the standards and building codes
- Up to 4 floors high with 8ft, 9ft and 10 ft high ceilings internally
- Flat roof or pitched roof trusses supplied as a kitset
- Site foundation and site preparation design supplied
- Site assembly ready to decorate in 5 days
- Pre-fitted with plumbing and hi-tech electrical systems
- Luxury fittings, materials and finishes or to your specification.
- Pre-manufactured Hardwood decks and balconies
- Lifetime construction guarantee (see ST and C)

Step 3: Designing modular

Pre wired and pre-plumbed



Tectainer Products Inc:

Bulk Containers

20ft and 40ft Full Opening Side Door Containers

Waste-management Containers

Open-top, GPs & Flatracks

LPG T50 tanks

27 tonne Bitumen tanks

28,000 Itr Lubricant & Oil Tanks

70 m3 Petrochem storage Tanks

26,000 Itr tank containers



Step 4: Online Production



Step 5: Meanwhile prepare simple site foundations



Step 6: Modular assembly onsite—fast.



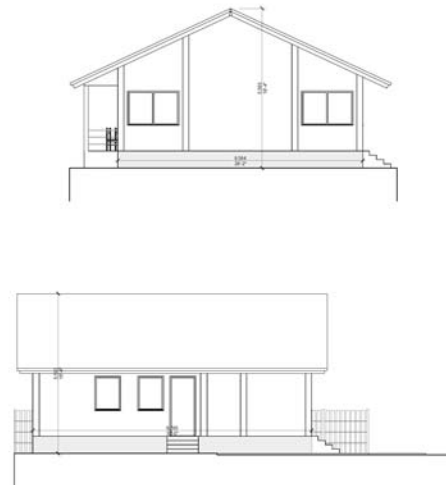
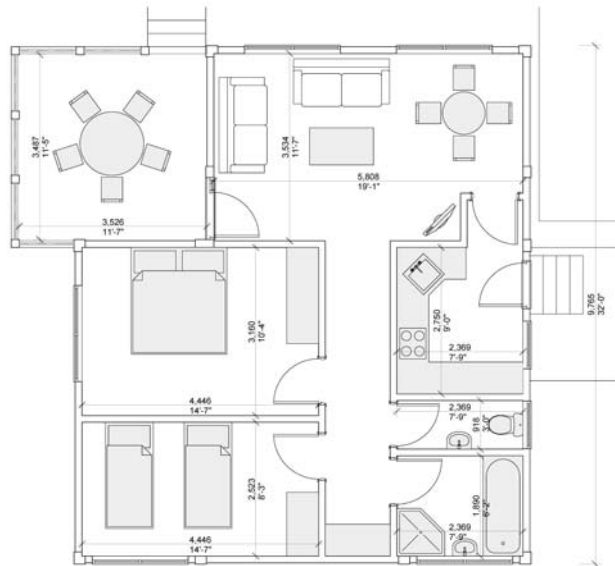
Land modules



Roof structure as kitset

Step 7: Clad and internally finish

Below & Left: Example of 2 bed affordable housing



Tectainer Products Inc:

Bulk Containers

20ft and 40ft Full Opening Side Door Containers

Waste-management Containers

Open-top, GPs & Flatracks

LPG T50 tanks

27 tonne Bitumen tanks

28,000 ltr Lubricant & Oil Tanks

70 m3 Petrochem storage Tanks

26,000 ltr tank containers